



**All Christians' Fellowship International**

P.O. Box 1193 \* Frederick, MD 21702 USA \* Phone (301) 695-4328 \* Fax (301) 591-4013

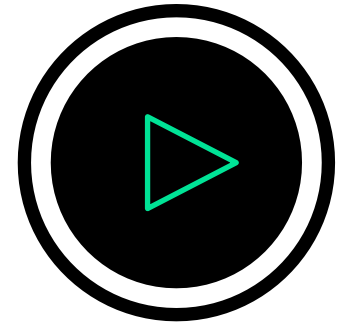


# WHY DID GOD CREATE HUMANS?



PERSONAL CHARACTER : LESSON 1

VIDEO



PERSONAL CHARACTER : LESSON 1



**01 WHAT INFLUENCES HAVE MADE YOU  
THE PERSON YOU ARE TODAY—  
FAMILY, FRIENDS, TEACHERS,  
COACHES, BIBLE, SOCIAL MEDIA, OR  
SOMETHING ELSE? Explain.**



**02 OFTEN, WE FEAR THAT IF OTHERS KNEW  
OUR FAULTS AND FAILURES, THEY  
WOULDN'T WANT TO BE AROUND US.  
HOW DO YOU REACT WHEN SOMEONE  
MAKES A MISTAKE?**

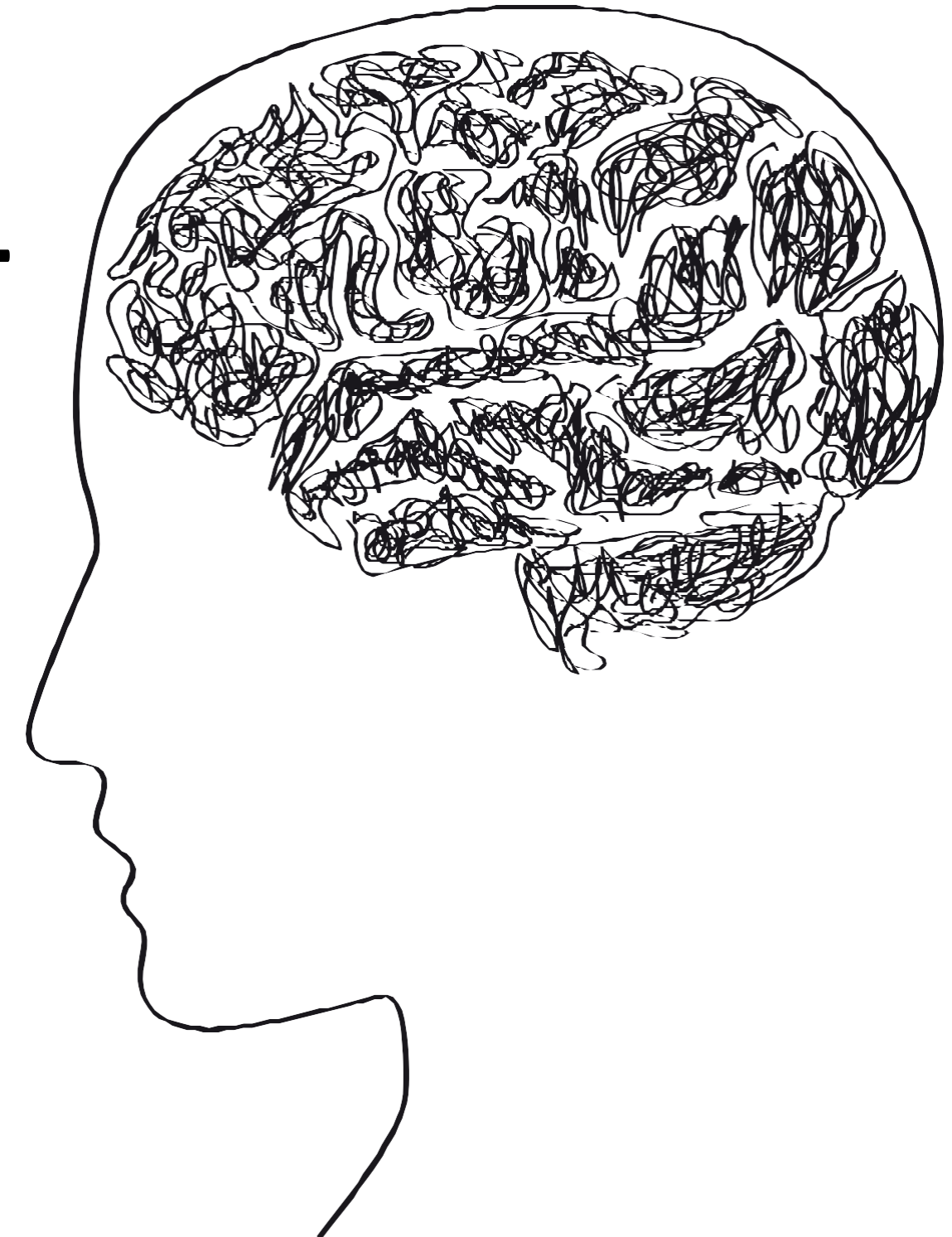




03

**WITH WHOM DO YOU FEEL MOST COMFORTABLE BEING YOUR TRUE SELF - YOUR PARENTS, SCHOOLTEACHER, PASTOR OF YOUR CHURCH? WHY?**

PERSONAL CHARACTER : LESSON 1





04

**WHAT DOES IT MEAN TO YOU THAT YOU ARE MADE IN GOD'S IMAGE AND THAT HE CREATED YOU TO REFLECT/MIRROW HIS CHARACTER AND NATURE TO THE WORLD?**





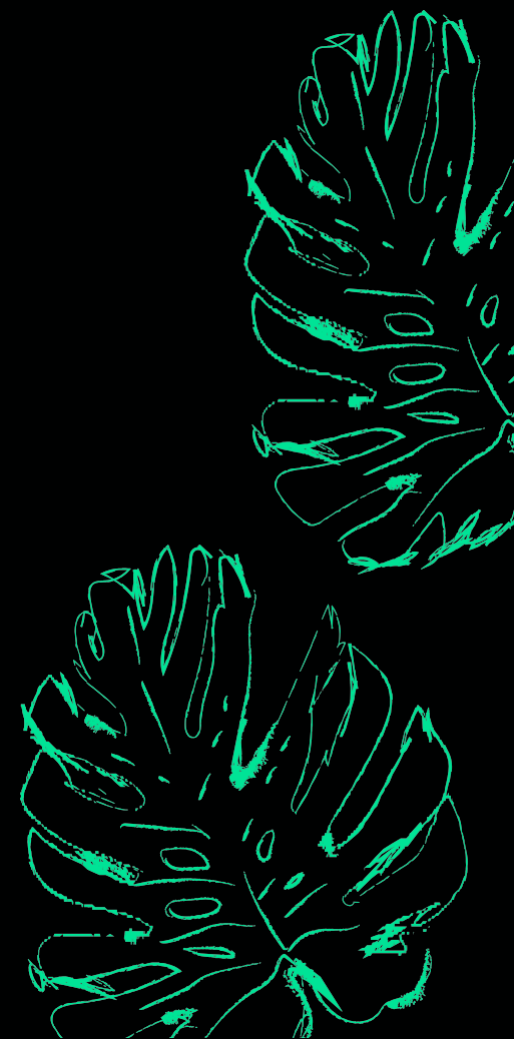
Then God said, “Let us make human beings in our image, to be like us. They will reign over the fish in the sea, the birds in the sky, the livestock, all the wild animals on the earth, and the small animals that scurry along the ground.” So, God created human beings in his own image. In the image of God, he created them; male and female he created them. Then, God blessed them and said, “Be fruitful and multiply. Fill the earth and govern it. Reign over the fish in the sea, the birds in the sky, and all the animals that scurry along the ground.”

***Genesis 1:26-28***



O Lord, our Lord, **your majestic name fills the earth!** Your glory is higher than the heavens. You have taught children and infants to tell of **your strength**, silencing your enemies and all who oppose you. When I look at the night sky and **see the work of your fingers**—the moon and the stars you set in place— what are mere mortals that you should think about them, **human beings that you should care for them?** Yet **you made them only a little lower than God** and crowned them with glory and honor. You gave them charge of everything you made, putting all things under their authority—the flocks and the herds and all the wild animals, the birds in the sky, the fish in the sea, and everything that swims the ocean currents. O Lord, our Lord, your majestic name fills the earth!

## *Psalm 8*

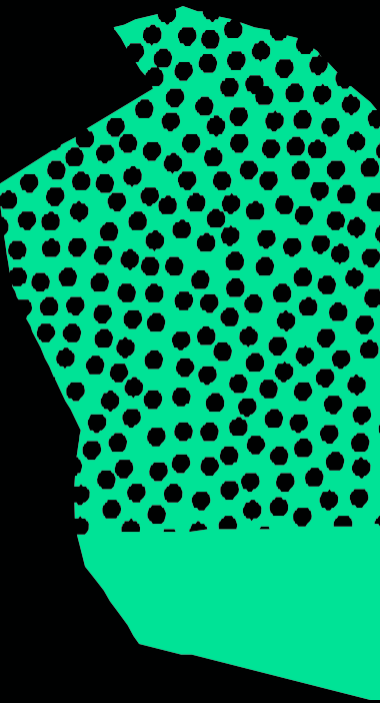






A good tree produces good fruit, and a bad tree produces bad fruit. A good tree can't produce bad fruit, and a bad tree can't produce good fruit. So every tree that does not produce good fruit is chopped down and thrown into the fire. Yes, just as you can identify a tree by its fruit, so you can identify people by their actions.

*Matthew 7:17-20*





For we are God's masterpiece. He has created us anew in Christ Jesus, so we can do the good things he planned for us long ago."

*Ephesians 2:10*



01

**IN YOUR OWN WORDS,  
WHAT DOES IT MEAN TO  
BE MADE IN THE IMAGE  
OF GOD?**





02

# WHY IS THE WRITER OF PSALM 8 SURPRISED HOW GOD IS DETERMINATION TO CARE FOR HUMANS?

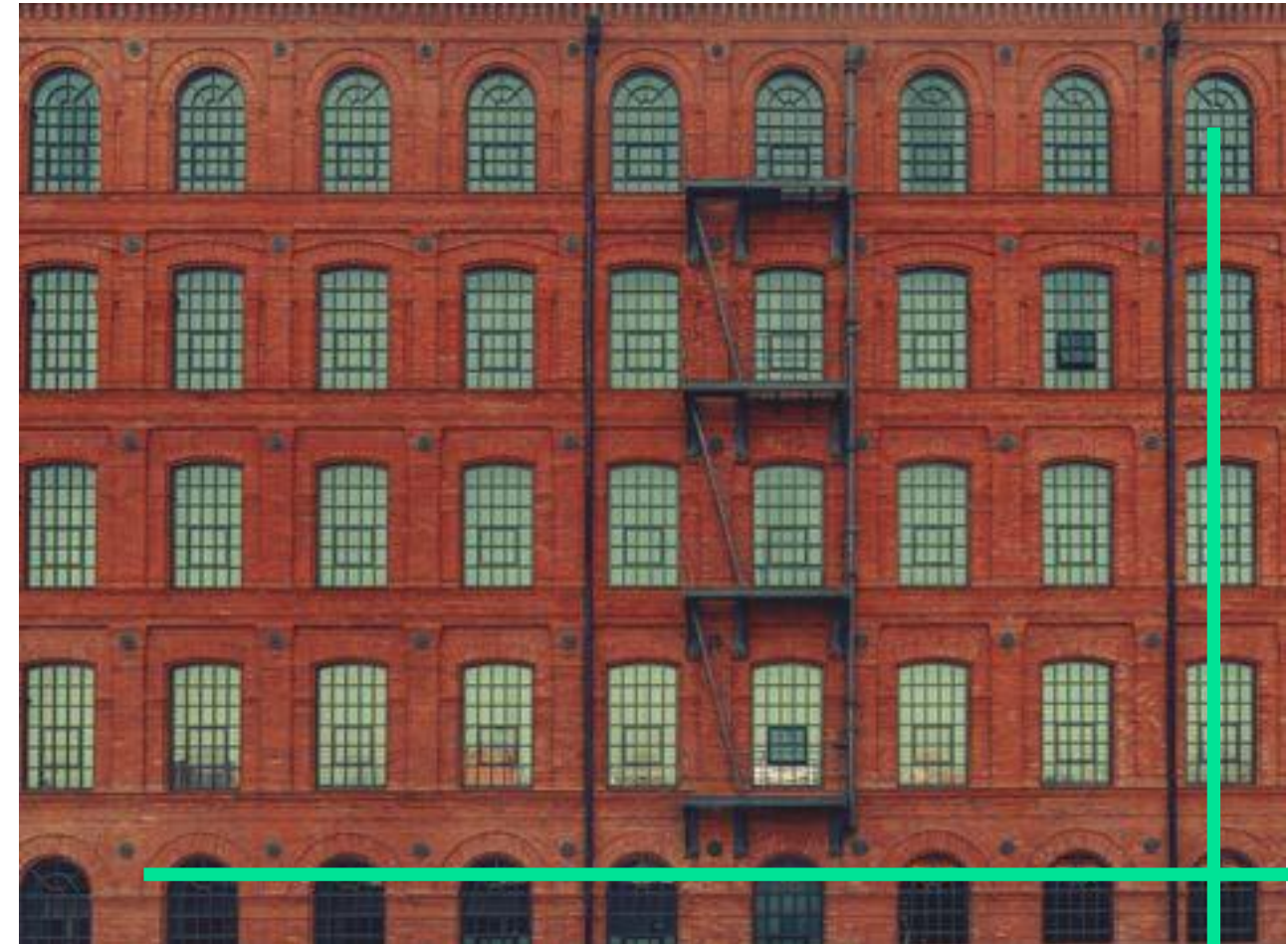






# 03

## ACCORDING TO MATTHEW 7:17- 20, HOW CAN WE IDENTIFY PEOPLE BASED ON THEIR ACTIONS?



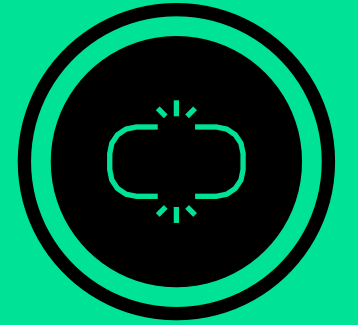




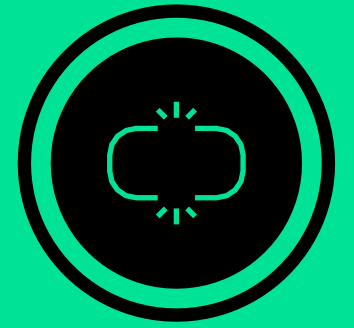
04

# ACCORDING TO EPHESIANS 2:10, HOW ARE WE ABLE TO DO GOOD WORKS?





# 01 IN WHAT SPECIFIC WAYS DO YOU BEAR/REFLECT GOD'S IMAGE TO THOSE AROUND YOU?



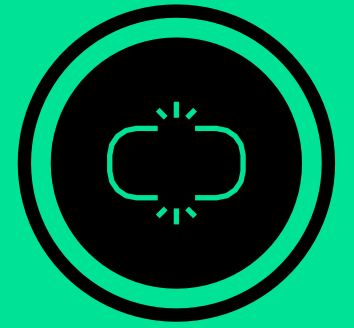
# 02 IS IT HARD FOR YOU TO BELIEVE THAT GOD CARES FOR YOU? WHY OR WHY NOT?



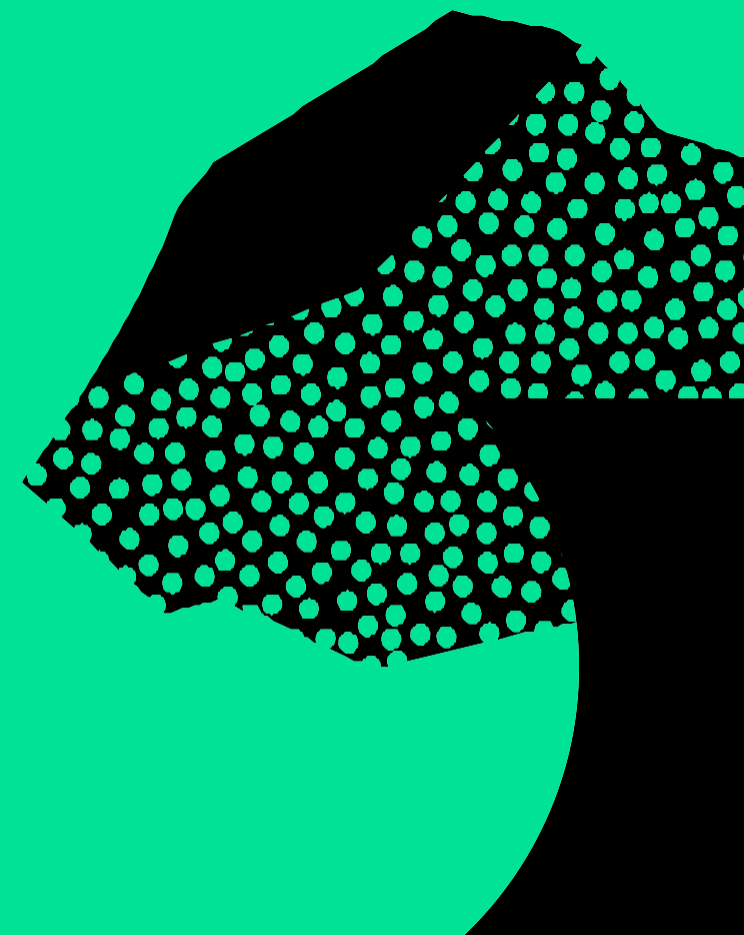
# 03 WHAT DO YOUR ACTIONS SAY ABOUT YOUR RELATIONSHIP WITH GOD?

PERSONAL CHARACTER : LESSON 1

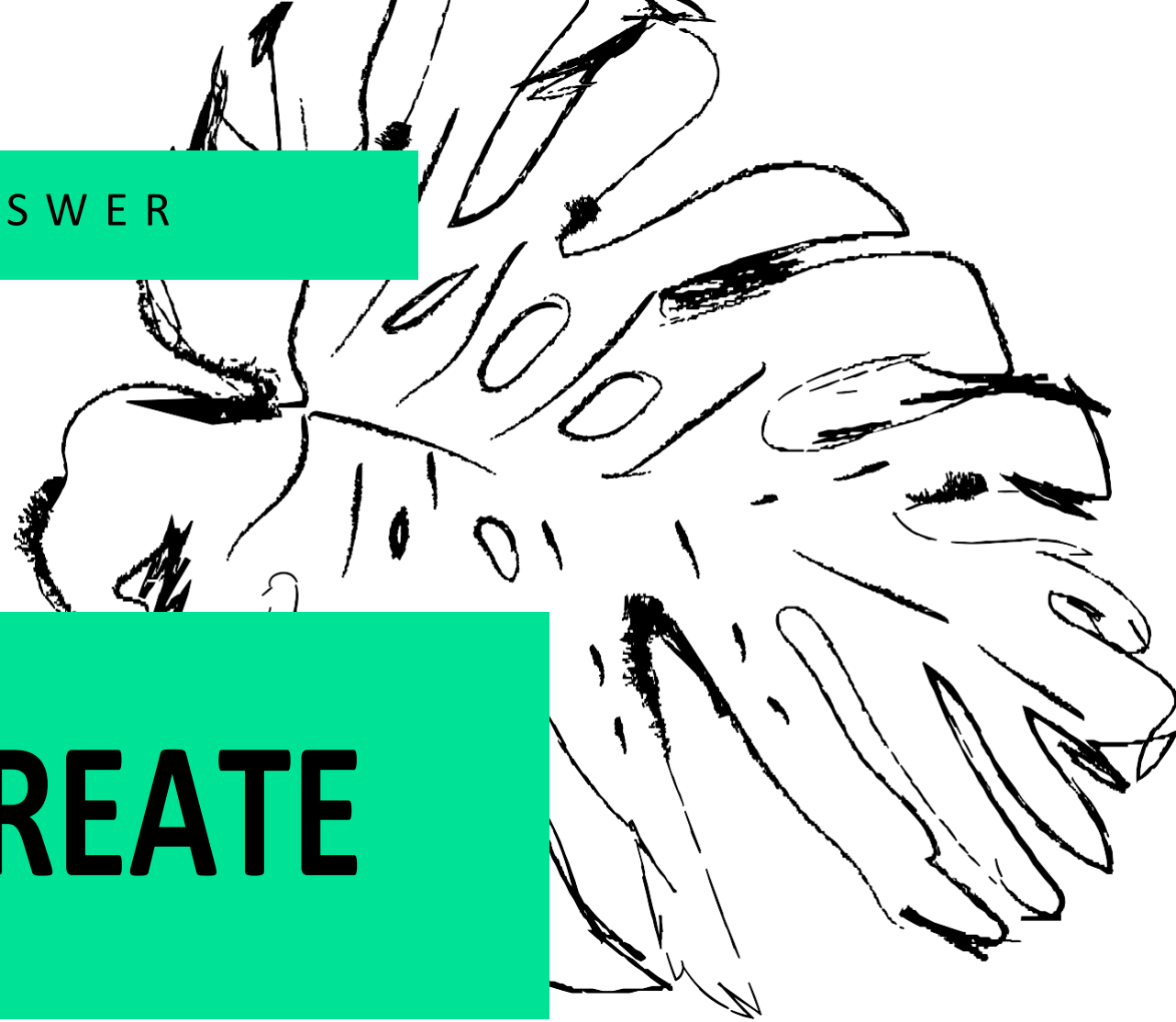




# 04 WHAT ARE SOME OF THE SPECIFIC GOOD THINGS YOU BELIEVE GOD HAS PLANNED FOR YOU TO DO?







# Q: WHY DID GOD CREATE HUMANS?

A: God created humans to know and worship him. We do this by reflecting his image to the world around us.